

Application

The anti-ageing therapy with the Polylaser derma consists of two components: **1. Laser stimulation**
2. RJ-Hyaluronan gel

Hyaluronan is a glycosaminoglycan distributed widely throughout connective, epithelial, and neural tissues. It is one of the chief components of the extra cellular matrix. While it is found in large numbers in extra cellular matrices, hyaluronan also contributes to tissue hydrodynamics (1 gr. can absorb as much as 6 liter of water).

Hyaluronan acid is a common skin care ingredient, due to its moisturizing effects. Hyaluronan injections for filling soft tissue defects such as facial wrinkles are commonly used, but have side effects and are not recommended for every patient. The result of RJ-Hyaluronan gel is analogous to injections and has additional advantages of longer lasting effects, large area application and decreased risk of allergic reaction.

Cosmetic application:

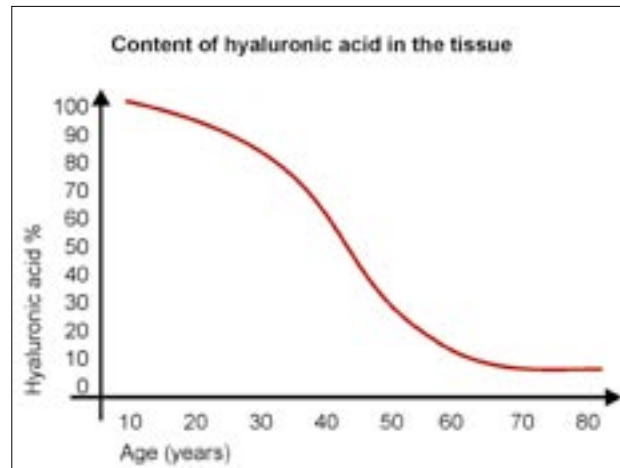
- Wrinkle reduction
- Skin vitalization and firming
- Refining of pores
- Wound healing

Step 1. preparation of the skin: cleaning, laser irradiation, open the pores with a hot towel (vaporiser).

Step 2. massage with RJ-Hyaluronan gel: apply the hot RJ-Hyaluronan gel.

Step 3. therapy with the Polylaser: irradiation for 10-20 minutes depending on the skin size

Step 4. deepening: depending if it is the first or second treatment the massage and irradiation should be repeated.



Delivery content:

Main unit, carrying case, two safety goggles, technical manual, stand, laser warning sign.

Laser cl. 3B



REIMERS & JANSSEN GmbH
Medical Technology - Laser Technology
Frohnacker 8, 79297 Winden, Germany
www.rj-laser.com



Certified according to ISO 13485:2003

Contact/distribution



Versión 1.0, 29.11.2006

Anti-Ageing Therapy



Anti-Ageing Therapy

The **Polylaser derma** is the compact multi-cluster laser for use in cosmetics (skin) for area therapy. You'll be surprised at how simple everything is, because the easy setting, ergonomic design and light weight enable you to work effortlessly.

12 laser diodes irradiate an area of about 20 cm² quickly. Three wavelengths for optimizing the therapy (total 400 mW) in order to reach all tissue layers (superficial, middle, deep):

635 nm (red)
655 nm (red)
785 nm (infrared)

The **Polylaser derma** uses a special „derma lens“ in order to optimize the photon supply and to enable a massage for better absorption of the RJ-Hyaluronan acid.

The new method instead of injection: The special RJ-Hyaluronan gel (disconnected) is applied to the skin, it will be absorbed and thereafter irradiated with the **Polylaser derma**. The energy of the Poly laser will cross link and activate the special RJ-Hyaluronan gel. The result is similar to the injection method, but more convenient for the patient (no pain, no side effects) and offers better results for large areas.



Polylaser derma



Rejuvenation



Before and after therapy with hyaluronan acid

Therapy photos: RJ-LASER, date 20.10.2006